



Everything You Wanted to Know About Smith Springs Elementary!



Address:

3132 Smith Springs Rd.
Antioch, TN 37013



Phone:

615-645-6465

Fax:

615-360-2107



School Hours:

8:00am-3:15pm

Office hours:

7:30am-3:30pm

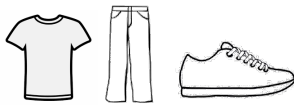
Arrival and Dismissal:

- The building opens at 7:30am for students to come inside, students will go to their classrooms at 7:45am. Please do not leave students unattended prior to the building opening.
- We want to keep students safe! Please do not park on the street, in the subdivision, or let students out at Smith Springs Road.
- If your student is a car rider throughout the year, you must have a car placard. This allows us to keep students safe and move the line quickly.
- For your student to be counted present for the day they can't leave before 11:30 or arrive after 11:30. (Pre-K would be 10:30)
- Early Dismissal ends at 2:15, after this time students will only be dismissed at regular dismissal time. If you need to change the way your student goes home, please call before 2pm so we have time to contact the student and teacher.
- Please use the link below if you need information on your student's bus stop or times of pick-up and drop off https://mnps.org/students-families/services/transportation/find_my_bus_stop

Student Attendance:

- We want students to be at school on time each day and stay for the entire day! We love having our students here but understand when things come up. If your student is absent, they must have a parent note or doctors note when they return.
- Notes should be submitted within 3 days of the absence.
- Students will be counted tardy if they arrive after 8:00am
- There will be a limit on the number of parent notes that will be accepted each semester.
- For the 22-23 school year the district expectation is that students have 95% attendance, meaning they can only miss 8 days or less in the school year.

Student Dress Code:



- Students are not required to wear standard School Attire each day.
- Students may wear any appropriate collared shirt, t-shirt, sweatshirt, Cardigan, or SSES top. Students may NOT wear tank tops, bare shoulders tops, Crop tops, or hoodies except for SSES hoodies.
- Students may wear any colored bottoms, jeans, knee length shorts, knee length skirts/dresses, athletic shorts, traditional uniform pants, and Leggings.
- Students may wear tennis shoes, sandals with a back strap, and boots. Students may not wear house shoes, Slides, or heels. Students must wear Tennis shoes for PE class!
- Students may not wear hoods, hats, or bandanas in the building at anytime, Religious head coverings are always permitted.

Parent Contact:



- We love connecting with parents! Be sure to join our Class dojo communication app! This will allow you to see weekly updates from school staff and stay in communication with teachers.
- It is also extremely important that we have updated contact information for you. IF your phone number changes during the school year, please let the office know so we can update that information.

Parent Involvement:



- We would love for you to join our PTA. This is our parent teacher association, and we thrive to reach a diverse population of volunteers to support our school. If you are interested in this opportunity, please reach out to Teresa.polniak@mnps.org

Social Media:

- Be sure to follow us on social media for school news and updates!



Smith Springs
Elementary



@SmithSpringsES



@ SmithSpringsES